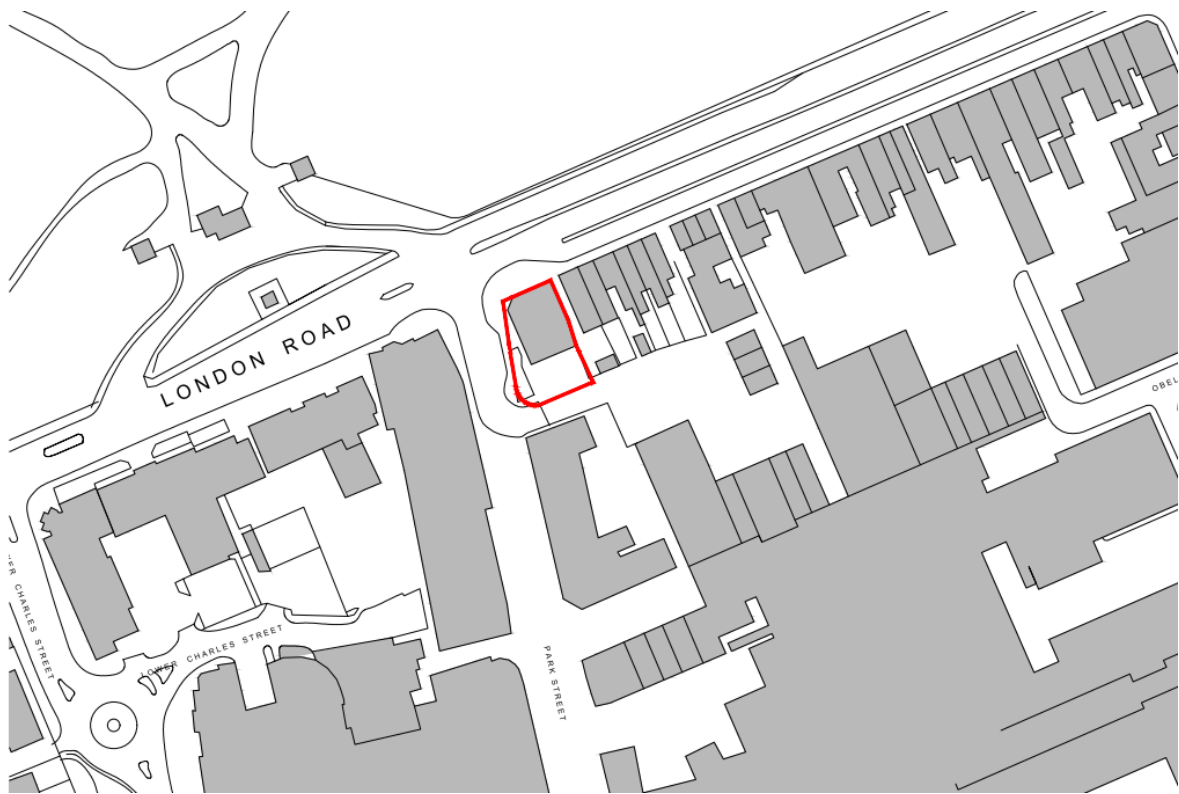
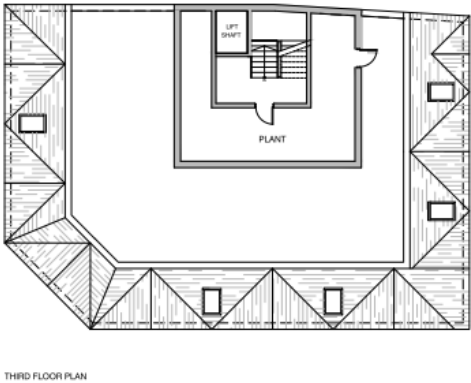
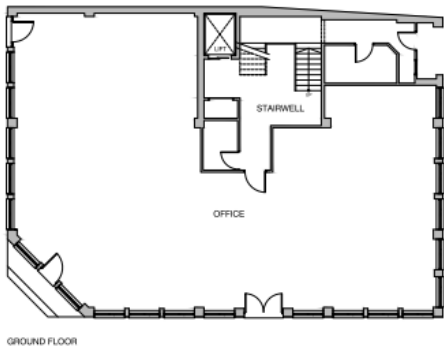
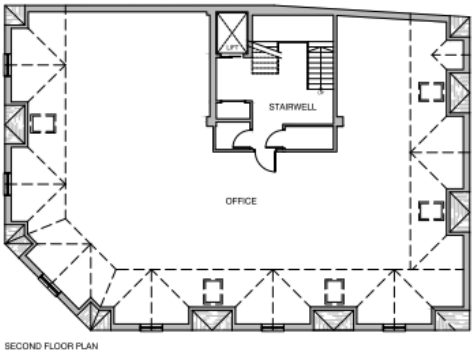
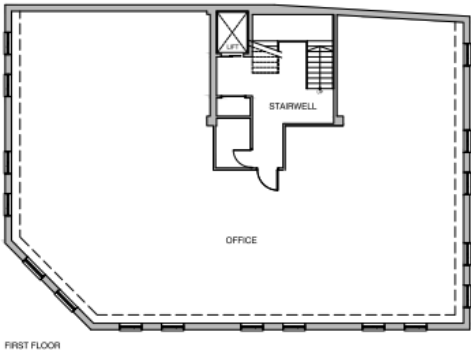


Location plan



Existing floorplans

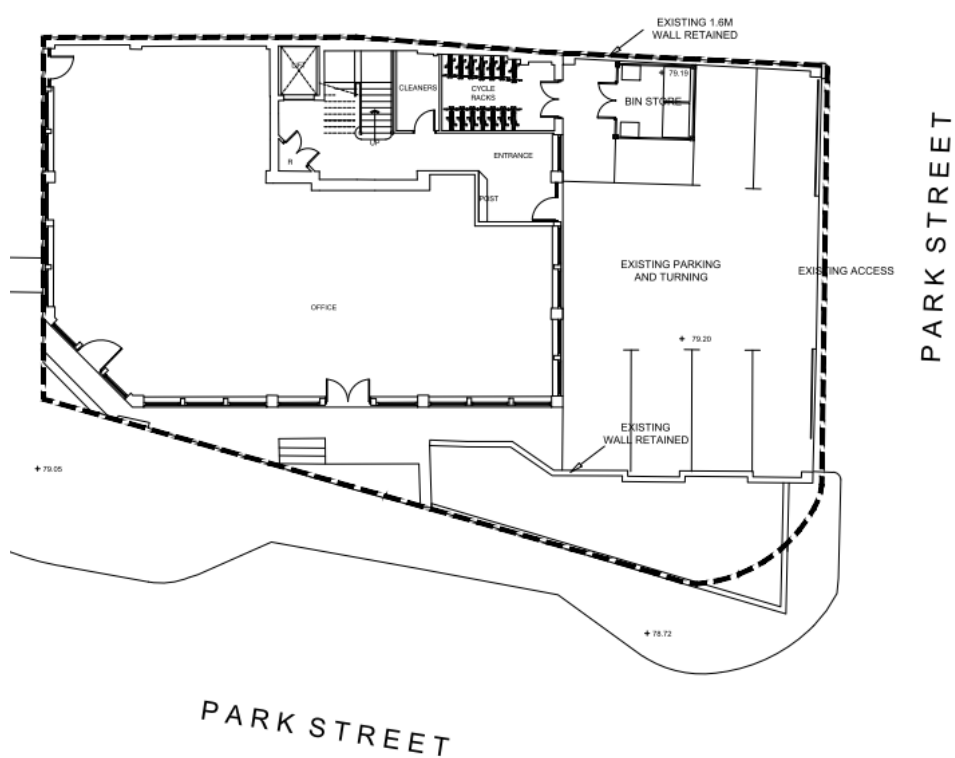


17/0701 – PARKGATE HOUSE, LONDON ROAD, CAMBERLEY

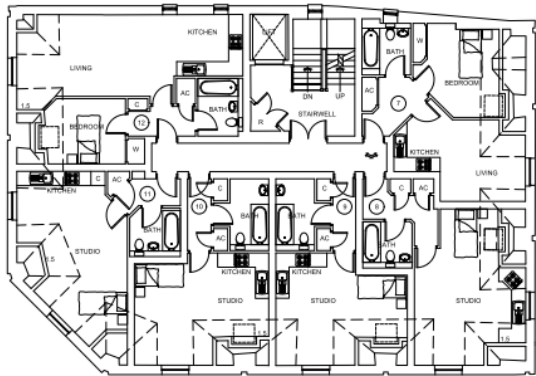
Existing Elevations – to London Road and Park Street



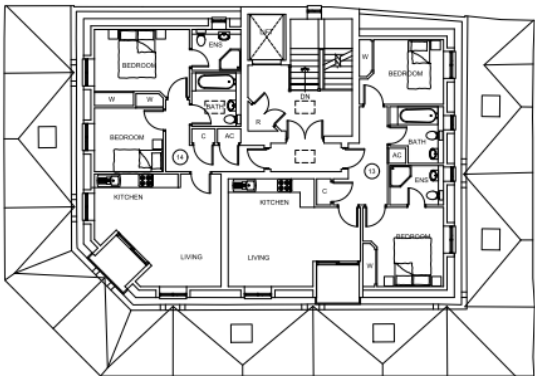
Proposed Site Layout – Ground Floor



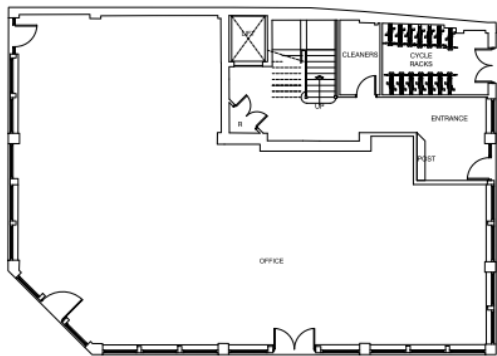
Proposed Floorplans



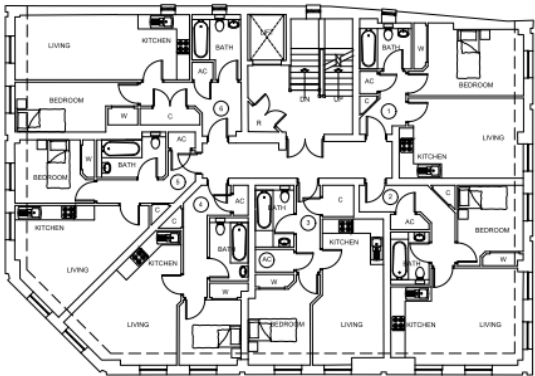
SECOND FLOOR PLAN



THIRD FLOOR PLAN



GROUND FLOOR PLAN



FIRST FLOOR PLAN

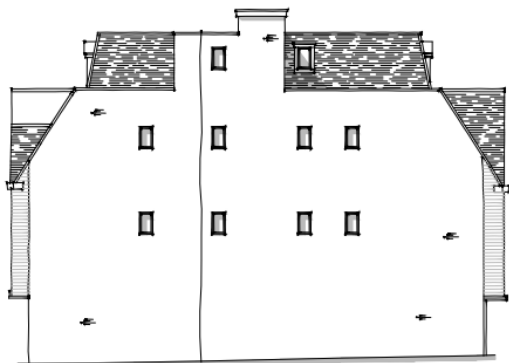
Proposed Elevations



WEST ELEVATION



SOUTH ELEVATION



EAST ELEVATION



NORTH ELEVATION

Proposed Street Scene to London Road



17/0701 – PARKGATE HOUSE, LONDON ROAD, CAMBERLEY

Photos of existing site

Site from London Road



Site from Park Street





17/0701 – PARKGATE HOUSE, LONDON ROAD, CAMBERLEY

Rear access and car park



Eastern side, looking towards Premier Inn



17/0701 – PARKGATE HOUSE, LONDON ROAD, CAMBERLEY

Eastern side elevation – alleyway between buildings

