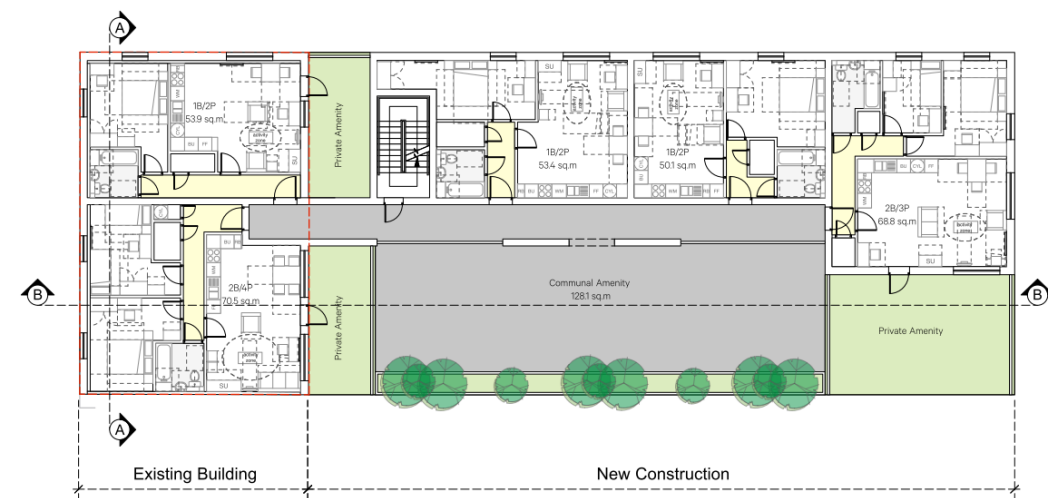
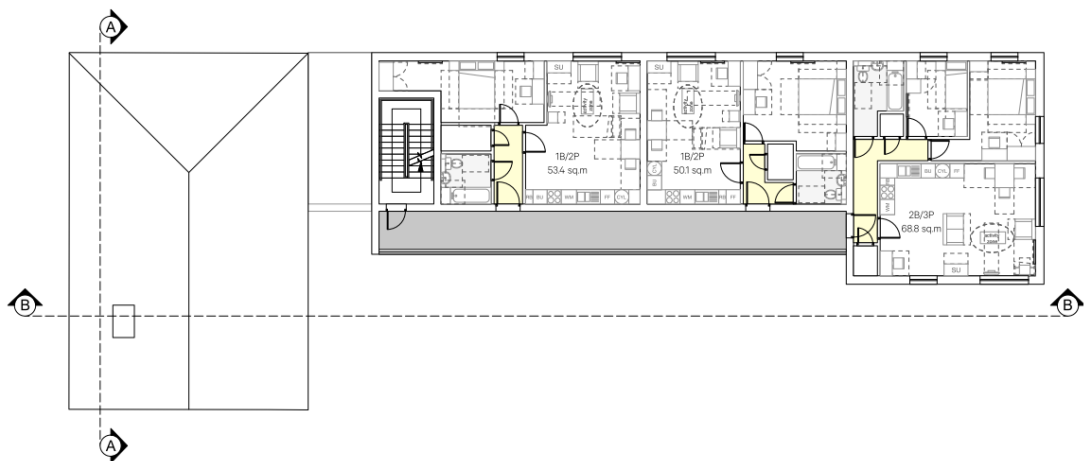


The detailed site plan illustrates the layout of the proposed retail building. The main area is labeled 'Retail 406 sq.m'. To the left, there is a 'Bin Store' and a 'Cycle Store'. To the right, there is a 'Parking/Service' area and a 'Plant' room. The plan includes a 'Retail Entrance' and a 'Residential Entrance' marked with red arrows. The plan also shows 'Existing Building' and 'New Construction' areas, along with various utility lines and dimensions.

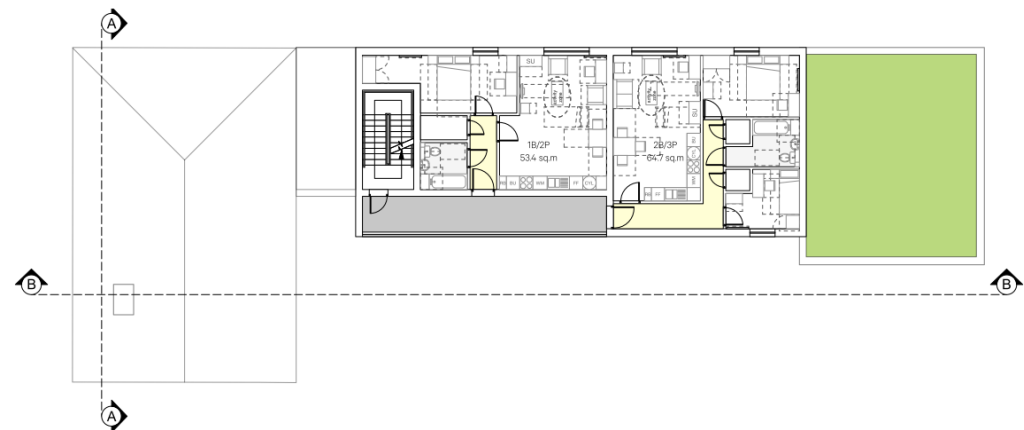
First floor plan



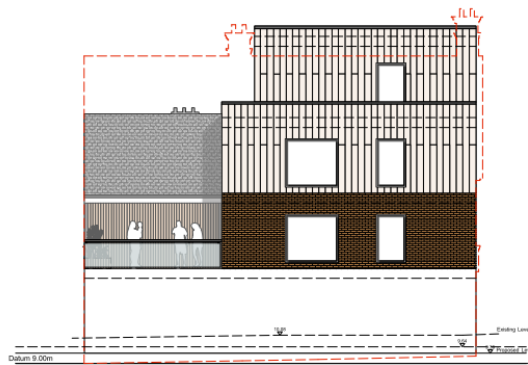
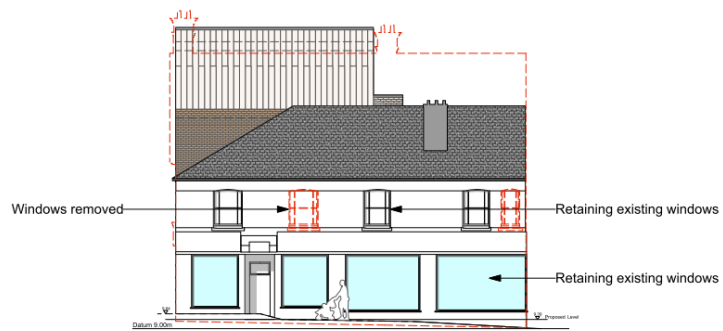
Second floor plan



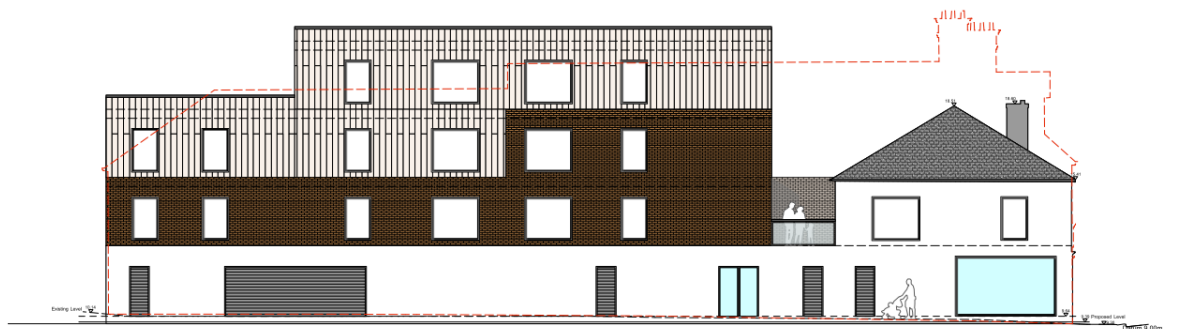
Third floor plan



Front and rear elevations



Side elevation



17/0653 – 11-13 HIGH STREET, CAMBERLEY

Application property



View from St. George's Road

